



Western States Water Council

A Voice for Water in the West



Privately Developed Groundwater Recharge

Dave Tuthill, Ph.D., P.E.
August 2, 2018



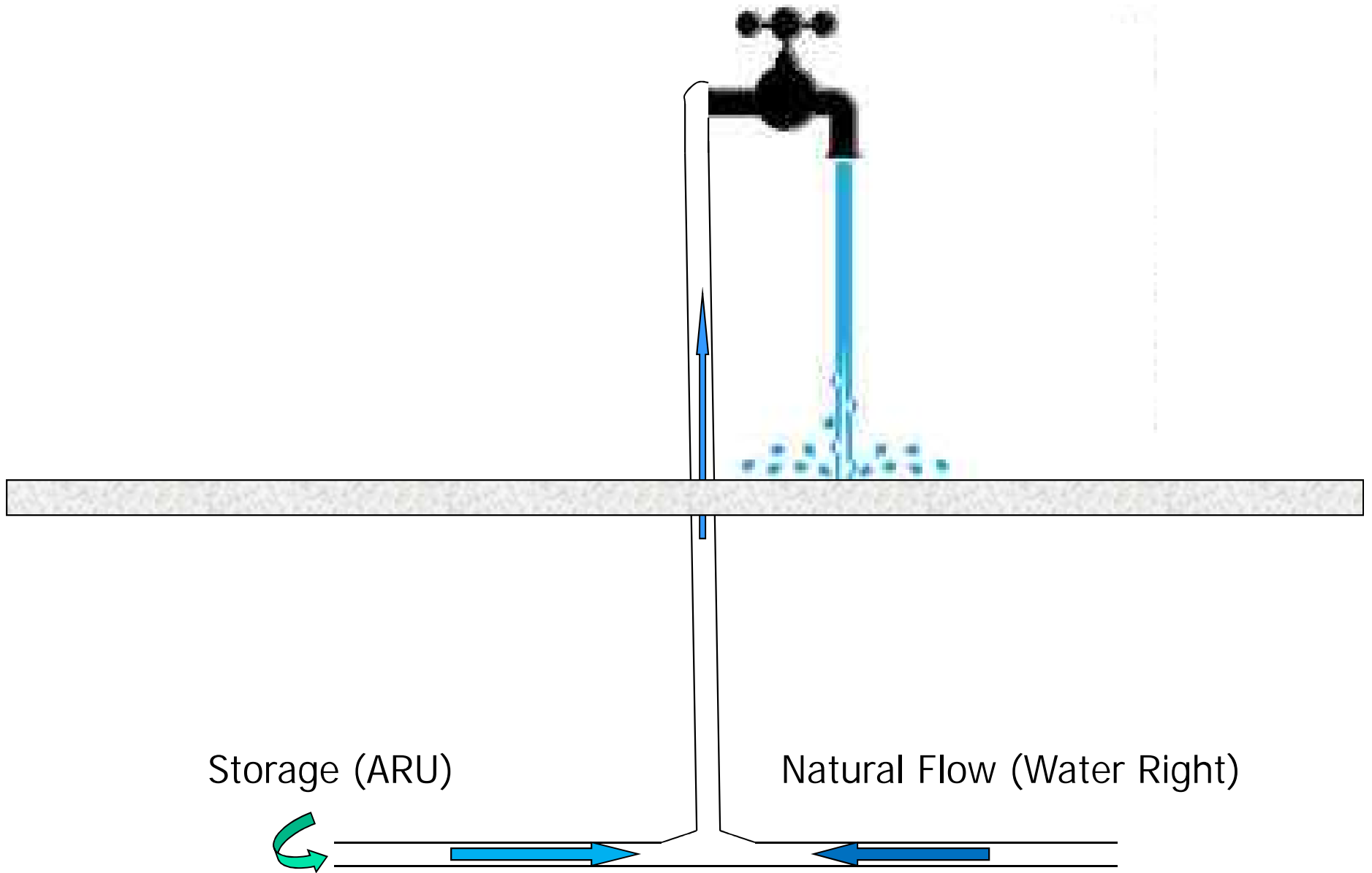
Topics

1. Why Privately Develop Managed Aquifer Recharge?
2. What are:
 - Recharge Development Corporation
 - An Aquifer Recharge Unit (ARU)?
3. How
 - Does this work?
 - Is this legal?
4. Where are eligible basins?
5. When can this happen?





Why Privately Develop Managed Aquifer Recharge?







What are:

- Recharge Development Corporation
- An Aquifer Recharge Unit (ARU)?



Recharge Development Corporation Mission

Establish self-perpetuating
Private Managed Aquifer Recharge
in basins throughout the world



Chris Pratt

President

Eastern Idaho Farmer

Dave Tuthill

Vice-President

Former IDWR Director

Ernest Carlsen

Secretary

Former Supervisor for Water Rights and Adjudication in Eastern Idaho for IDWR

Ron Carlson

Treasurer

Former Watermaster of Water District 1

Hal Anderson

Director

Former Administrator of IDWR Planning and Technical Services Division

Keith Esplin

Director of Industry Outreach

Community Outreach

Kent Foster

Advisor

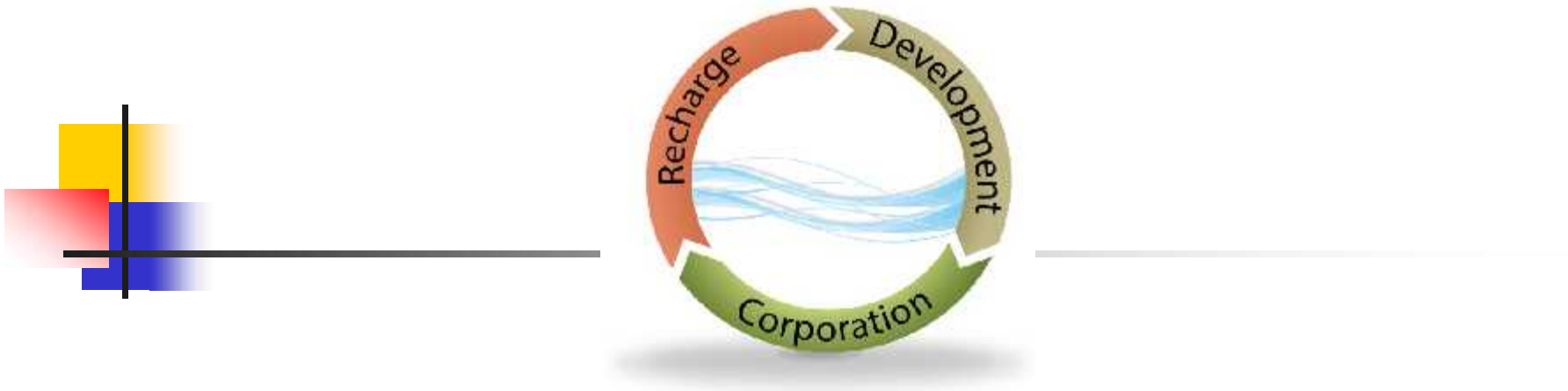
Former water attorney in Eastern Idaho

Phil Rassier

Director

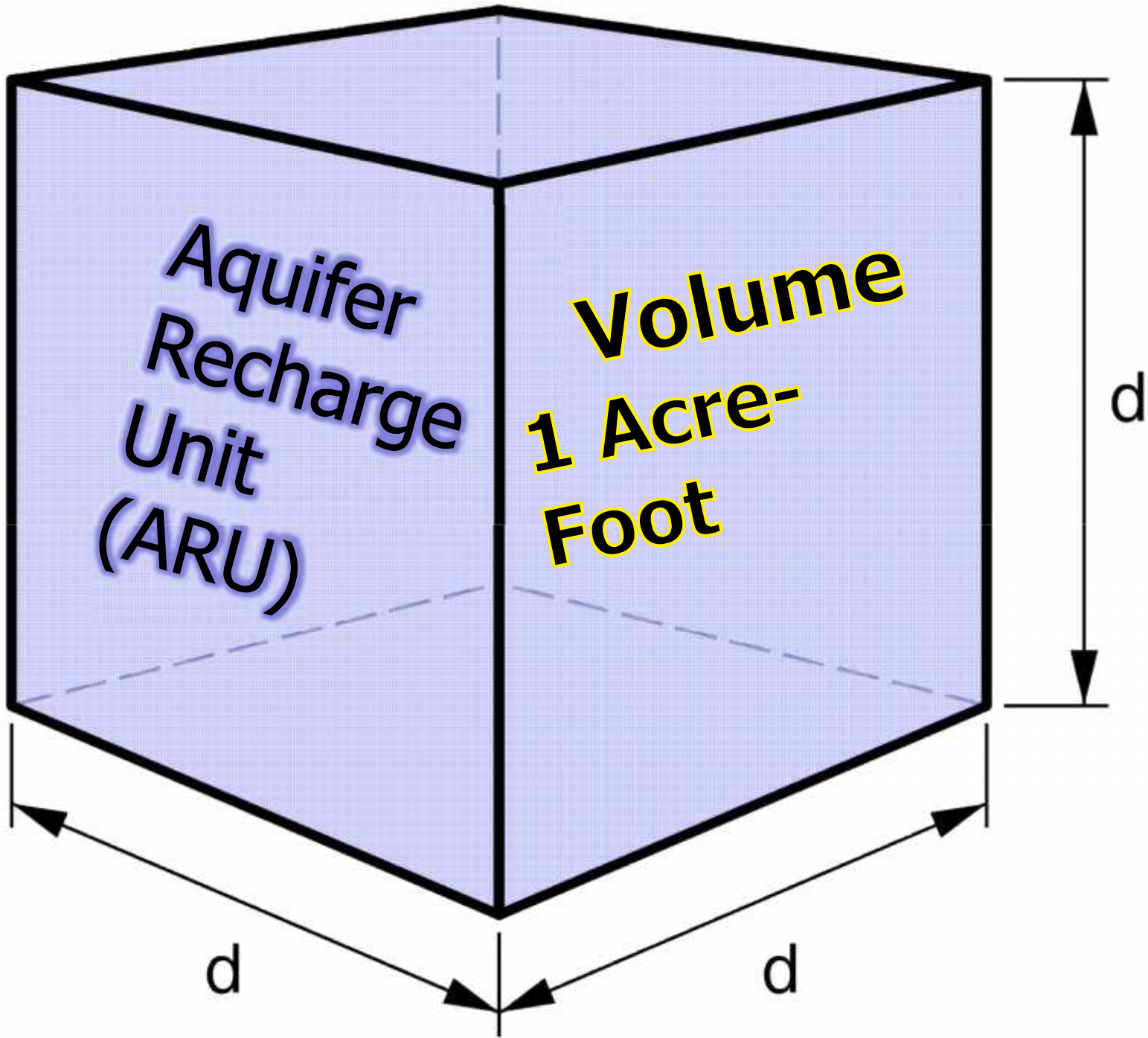
More than thirty years as lead attorney for IDWR





Aquifer Recharge Unit (ARU)

An ARU represents one acre-foot of space in the aquifer equivalent to one acre-foot of space in a surface reservoir.

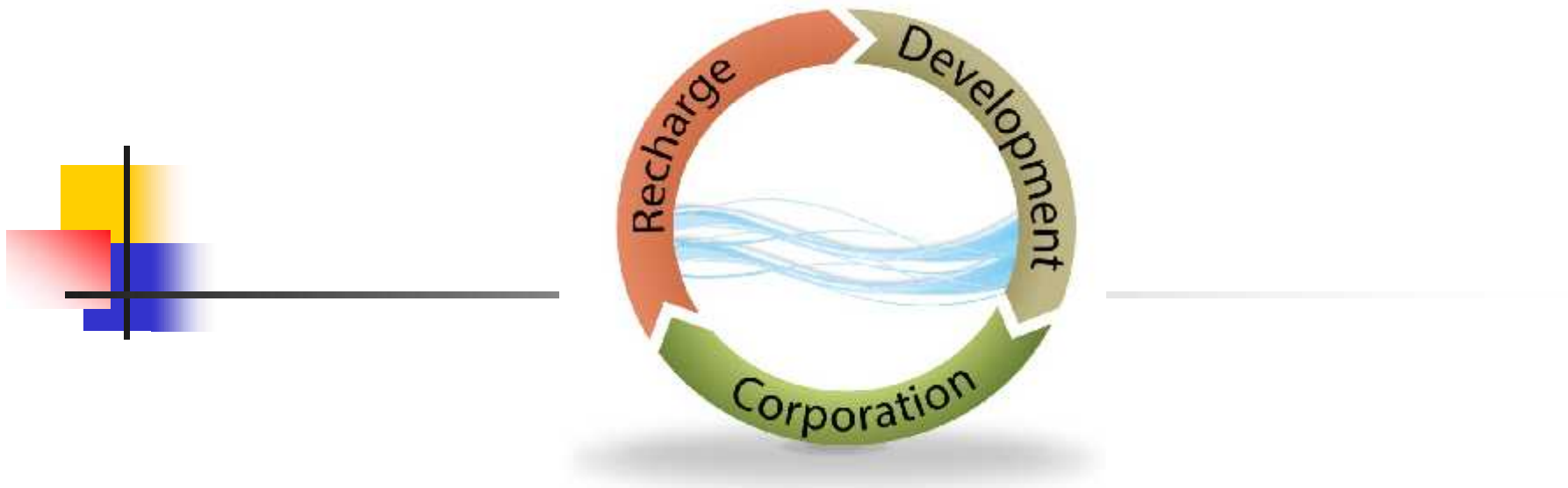




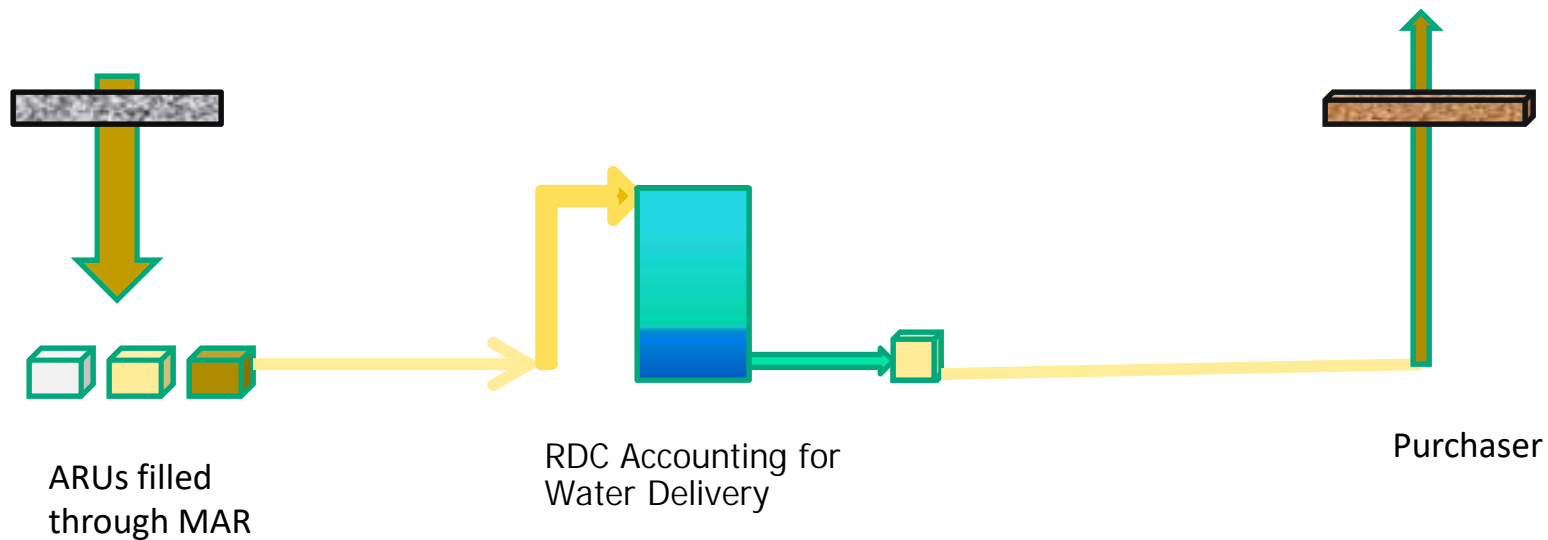
How

- Does the process work?
- Is this legal?



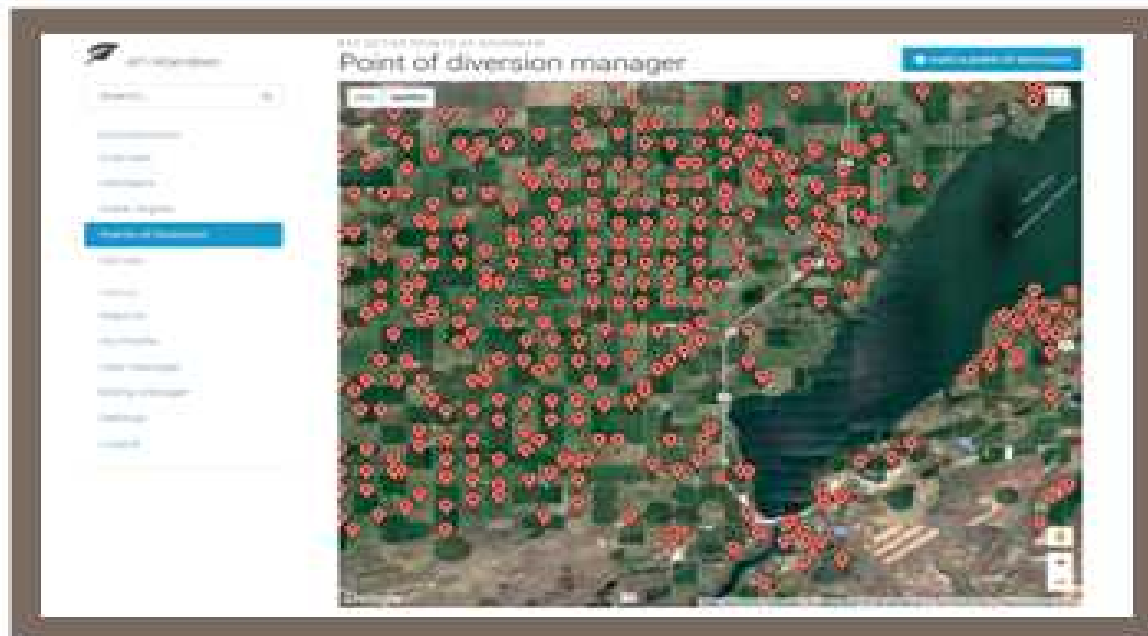


RDC™ Patented Process for Owning Recharged Water





Teton Technology Water Resource Management



Points of Diversion manager shows all active wells within a district.
Hover over the WIMS number of the location.

What can we provide?

Productivity.

- Automated data gathering telemetry.
 - Time and money saved year after year.
 - Realtime water usage and recharge for forecasting and allocation development.
- Calculated Assessments for even complex assessment algorithms that include:
 - Priority Dates
 - Tiered Systems
 - Recharge Credits

Reprinted by D. Tuthill with permission from the Publisher
Reproduction without permission strictly prohibited



The Water Report TM

Water Rights, Water Quality & Water Solutions in the West

In This Issue:

Conjunctive
Management 1

Stormwater
Regul
& Man

CONJUNCTIVE MANAGEMENT IN IDAHO

PUBLIC-PRIVATE PARTNERSHIPS & CONJUNCTIVE MANAGEMENT OF SURFACE AND GROUND WATER

by David R. Tuthill, Jr., Phillip J. Rassier, and Hal N. Anderson
Idaho Water Engineering, LLC (Boise, Idaho)

Public-Private Partnerships can reduce development risks, provide more cost-effective and timely infrastructure delivery, offer the potential for better ongoing maintenance, and leverage limited public sector resources, all while

Article available at idahowaterengineering.com
and at rechargeddevelopment.com

essing
w.



Where

- Are eligible basins?



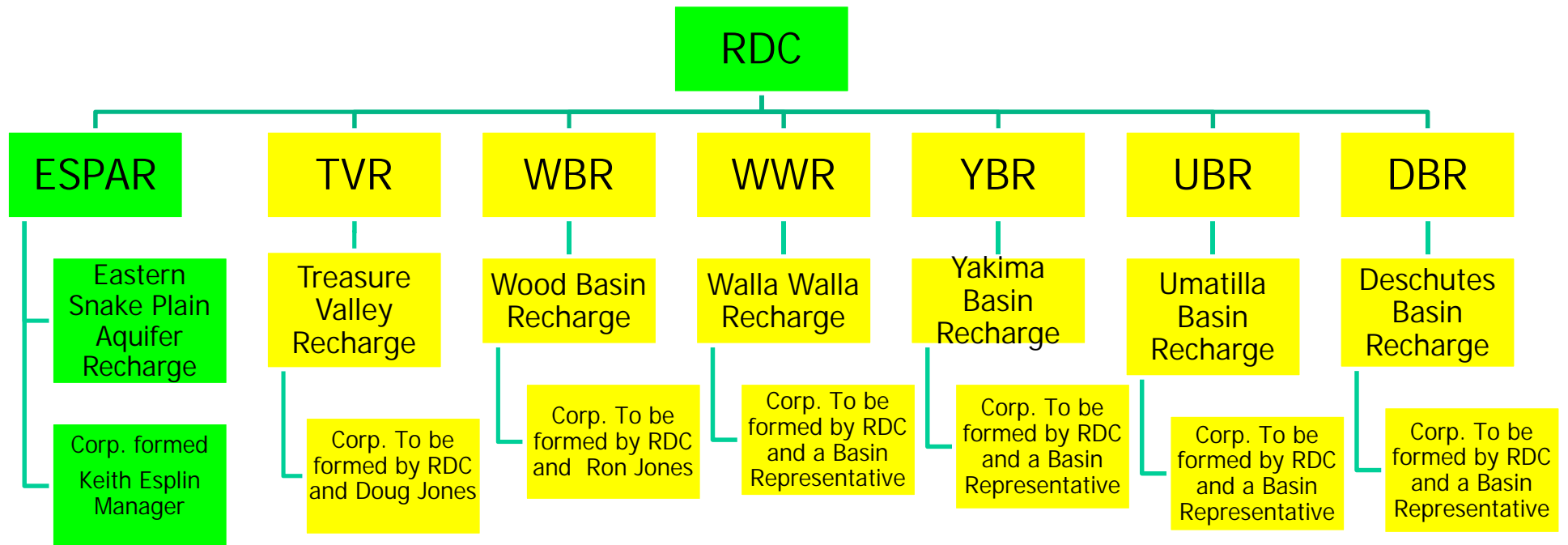


If wells in a groundwater basin:

1. Are now being regulated or are facing curtailment due to insufficient water supply, and
2. Are proximate to a source of supply that during some periods has excess flow (such as during spring runoff), and
3. Divert from an aquifer that is physically amenable to ground water recharge.

Then, we recommend a consultation.

RDC Organizational Structure



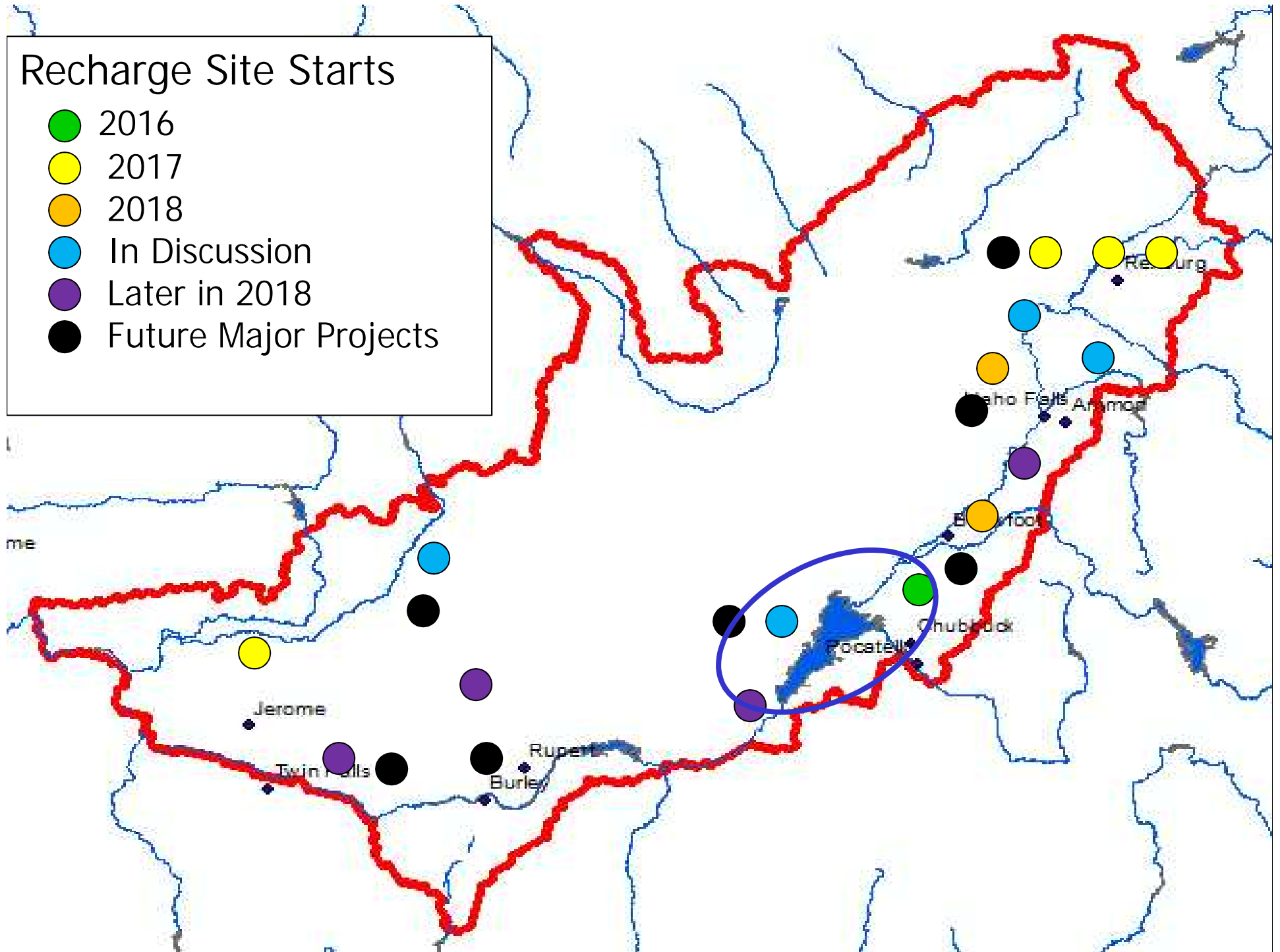


When can this happen?



Recharge Site Starts

- 2016
- 2017
- 2018
- In Discussion
- Later in 2018
- Future Major Projects





Summary

- RDC is ready now to assist implementation of Private Managed Aquifer Recharge in basins where groundwater uses are restricted.



Thank you.

