

# UNDERSTANDING THE SRBA RESOLUTION

A FOUNDATION FOR IDAHO  
& NATIONAL WATER POLICY



## IDWR's Technical Advisor Role



Dave Tuthill, PhD, PE

August 25, 2014





# Key Points

---

- Technical Staff
- Integration of GIS
- Digital Boundaries
- Preliminary Report Review



# Technical Staff – Supervisors 1985 - 2014

---

- State Office

- Don Shaff, Carter Fritschle, Craig Saxton, Anita Warntjes, Danni Smith
- Michael Ciscell (GIS)

- Regional Offices

- Eastern – Ernest Carlsen/Michael Holliday
- Southern – Allen Merritt/Doug Jones
- Western – Jan Shurte



# Integration of GIS

---

- Non-relational Database 1985 – Claims Taking
- Migration to a Relational Database
  - Blueprint development 1997
  - Migration 1998-2000 (\$2M)
  - Included integration of a Geographic Information System (GIS)



- [Water Rights](#)
- [Wells](#)
- [Streams, Dams & Flooding](#)
- [Forms](#)
- [Water Data](#)
- [Maps & Spatial Data](#)
- [Legal Actions](#)
- [About IDWR](#)

## Welcome!

The Idaho Department of Water Resources serves the people of Idaho and protects their welfare by making sure water is conserved and available to sustain Idaho's economy, ecosystem and the resulting quality of life. IDWR provides a variety of services for the public, such as water rights research, historical record reproduction of water rights, driller's reports, and dam safety inspections.



[Read more about the history of IDWR »](#)

## Need additional help? Try these quick links!

 [Using IDWR Water Right Research Internet Tools](#)

 [Search Water Rights](#)

 [Map Search Tool](#)

 [Northern Idaho Adjudication File A Claim](#)

 [Water Right Transfers](#)

 [Well Drillers' Locator Tool](#)

 [New Water Rights Applications](#)

### What's New

- [» Snow Water Equivalency Maps](#)
- [» Rangen Delivery Call-Mitigation Plans](#)
- [» ESPA Curtailment Notice](#)
- [» Evaluation of Minimum Well Seal Depth](#)
- [» Negotiated Rule Making - ESPA Boundary](#)

### Most Visited Pages

### Frequently Asked Questions

- [» Rangen Delivery Call-Curtailment Orders](#)
- [» Wood River Valley Modeling Project](#)
- [» Teton Creek Flood Control District](#)
- [» IWRB Recharge Applications](#)
- [» IWRB Board Meeting](#)



Who or what is the Idaho Water Resource Board?



## Water Right and Adjudication Search

↓ Choose One or More Search Items

↓ Click "Search" To Enter Your Parameters



Name

- All
- Search for a specific Name



Adjudication, Water Right & Basin or Transfer

- All
- Search for a specific Basin, Right or Transfer number



Location of Use or Diversion

- All
- Search for a specific Location by legal description



Sources

- All
- Search for Surface Water, Ground Water or a specific Source &/or Tributary



Water Use

- All
- Search for a specific Water Use



Dates

- All
- Search for a specific Date Type & range of Dates



Water Right Types

- All
- Search for one or more specific Water Right Types



Status

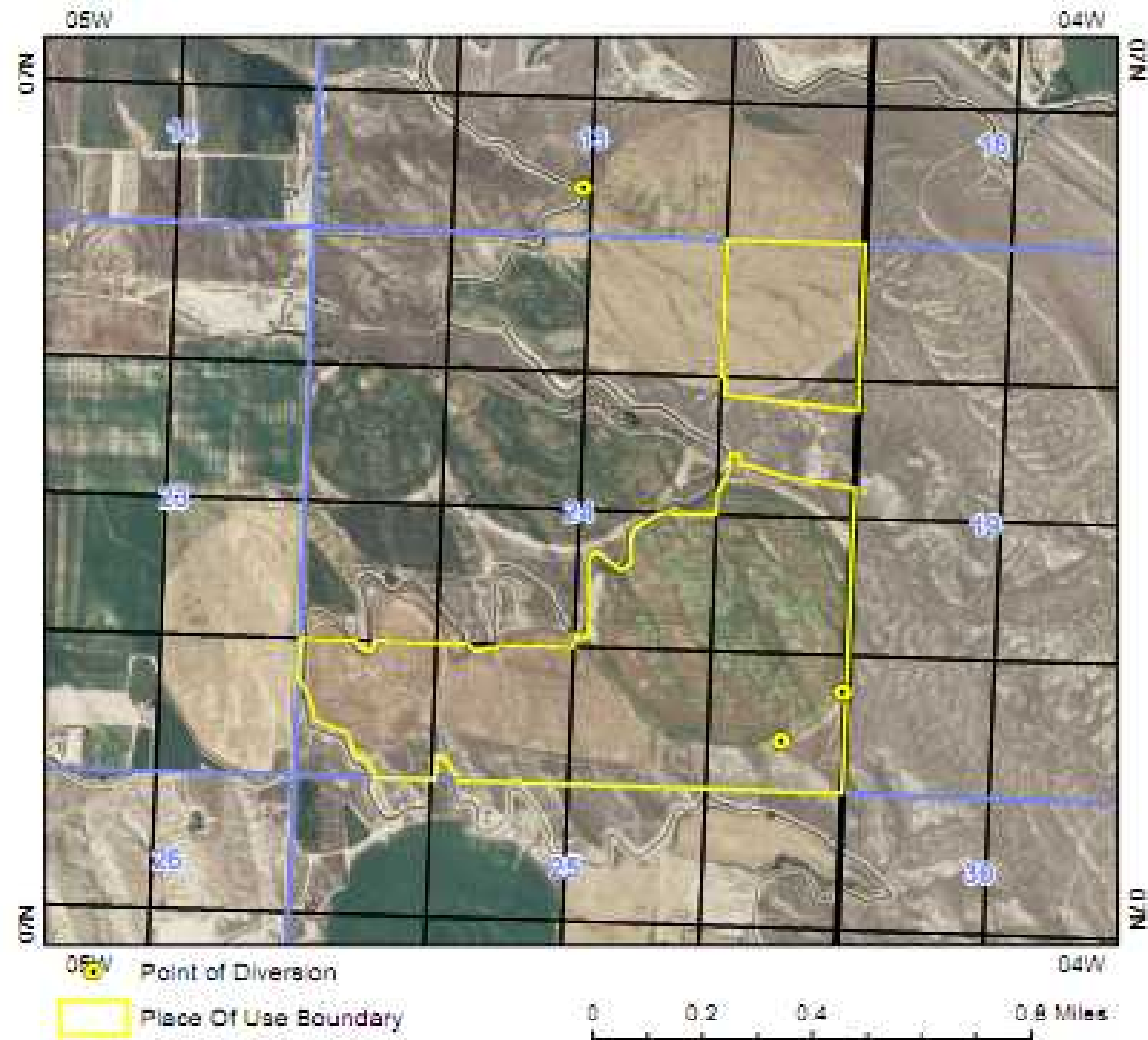
- All
- Search for both Active & Inactive Records



# Water Right 63-7460

## IRRIGATION

The map depicts the place of use for the water use listed above and point(s) of diversion of this right as currently derived from interpretations of the paper records and is used solely for illustrative purposes. Discrepancies between computer representation and the permanent document file will be resolved in favor of the actual water right documents in the water right file.









# Digital Boundaries

---

- Added to the Idaho Code in 2002

(2) "Digital boundary" means the boundary encompassing and defining an area consisting of or incorporating the place of use or permissible place of use for a water right prepared and maintained by the department of water resources using a geographic information system in conformance with the national standard for spatial data accuracy or succeeding standard.

State of Idaho  
Department of Water Resources

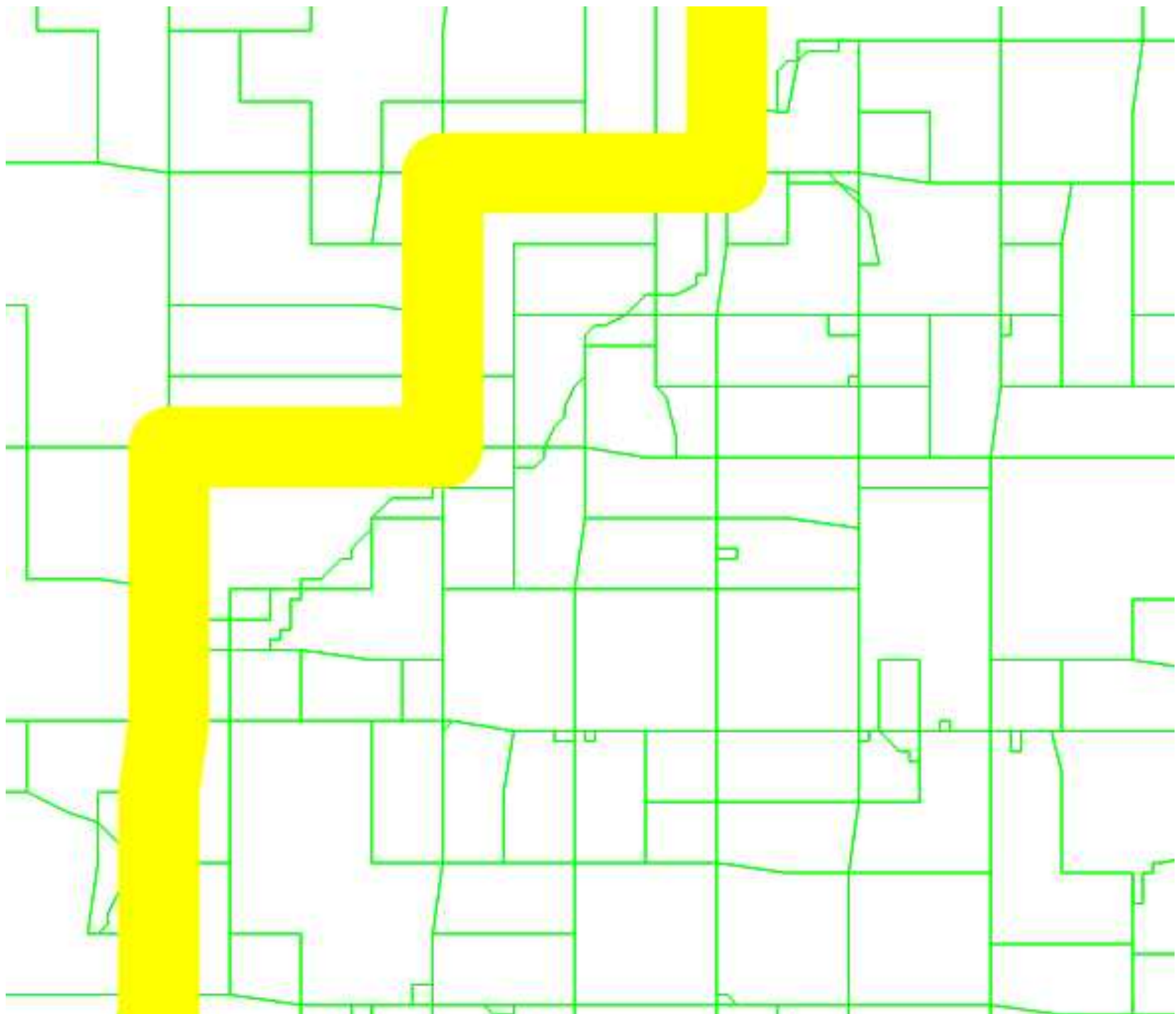
# Water Right

1-16

## IRRIGATION

The map depicts the place of use for the water use listed above and point(s) of diversion of this right as currently derived from interpretations of the paper records and is used solely for illustrative purposes. Discrepancies between the computer representation and the permanent document file will be resolved in favor of the actual water right documents in the water right file.







# Preliminary Reports

---

- Preliminary versions of recommendations sent to all claimants
- Copies made available in the county courthouses
- Meetings held locally with claimants so IDWR staff could assist with explanations and corrections
- Error correction finalized before Director's Report sent to the Court